

CERTIFICATE OF LOCATION OF GOVERNMENT CORNER

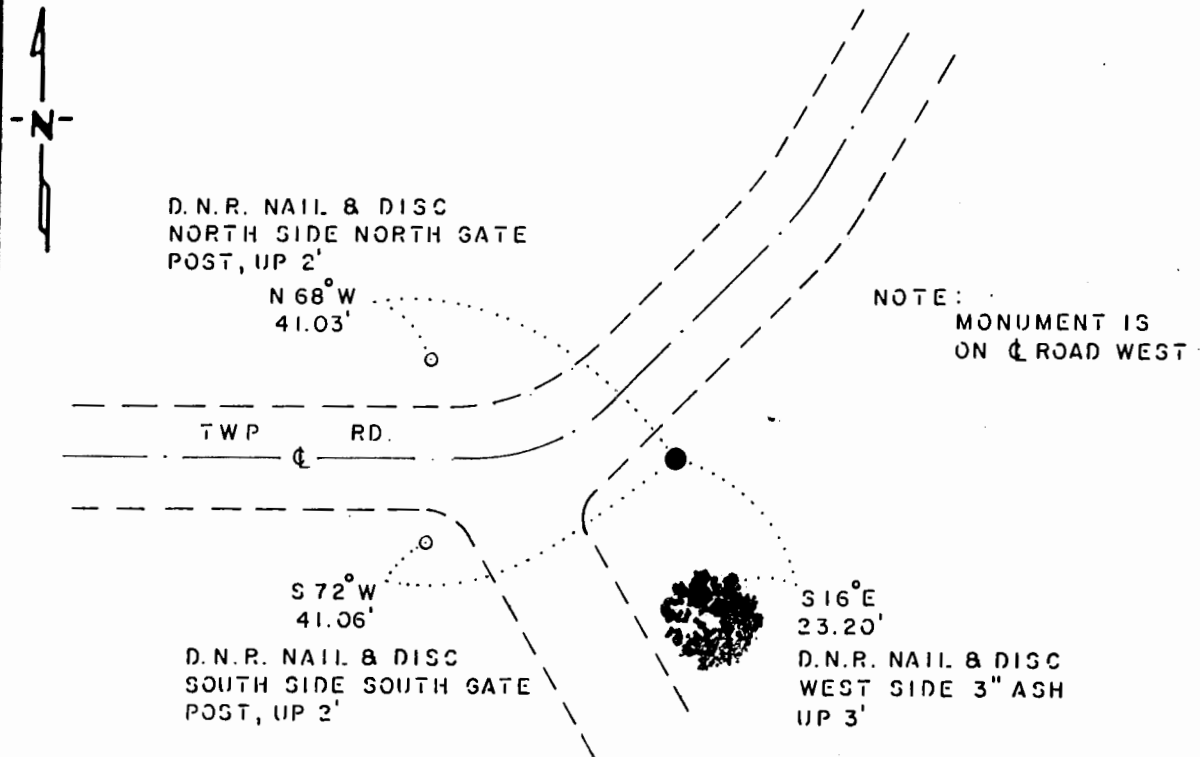
NORTH QUARTER Corner of Section 25, Township 107 N., Range 39 W., 5th P.M.

STATE OF MINNESOTA, County of MURRAY

At the corner location shown on the sketch:

- On 7-3-85 found a 7"x8"x10" STONE, DOWN 15"
DATE
- left monument as found, lowered monument, removed monument (explain)
- On 7-3-85 placed a 1 1/4"x1 1/4"x20" PERFORATED STEEL TUBE WITH
DATE
ALUMINUM CAP STAMPED "D.N.R. SURVEY MARKER" OVER STONE, DOWN 0.1'

SKETCH OF REFERENCE TIES



NOTE: MONUMENT IS ON ϕ ROAD WEST

BEARINGS OBSERVED WITH COMPASS

Statement of evidence relative to this corner location is on back of page.

J. B. M. 10-30-85
6-1181

I hereby certify that this document and the data contained herein was prepared by me or under my direct supervision.

Lowell R. Pomeroy 11-7-85
SIGNATURE DATE

Registration No. 17005

- Land Surveyor, Professional Engineer
- County Surveyor, County Engineer

OFFICE OF THE COUNTY RECORDER

County of _____

I hereby certify that this document was filed in the Co. Recorders office at _____ .M. on the _____ day of _____ A.D., 19 _____

County Recorder _____

By _____, Deputy

DOCUMENT NO. _____

North Quarter Corner Section 25, Township 107 North, Range 39 West

This corner was originally established by the U. S. General Land Office survey in 1861. The government notes do not state what was set to mark the corner.

In March 1985, the DNR Bureau of Engineering contacted the following for corner information:

Murray County Offices of the Recorder and Highway Engineer
Mn/Dot Office in St. Paul
U.S. Dept. of the Interior, Fish and Wildlife Office in Minneapolis
Land Surveying Firms:
Martin Land Surveying of Worthington
Madsen Land Surveyors of Fairmont
Sioux Engineering of Windom

The following information was obtained from the County Recorder's Office:
Surveyor's Record Book, on Page 86, contains a survey by J. W. Woolstencraft, County Surveyor, dated June 21, 1899. Survey shows corner:
2652 feet from the northwest corner Section 25
2600 feet from the center of Section 24
Survey does not state what was found or set at the corner.

Surveyor's Record Book, on Page 289, contains a survey by J. W. Woolstencraft, County Surveyor, dated April 11, 1924. Survey states corner is a stone on the north side of a road ditch. Corner is shown:
1320 feet from the northeast corner of the northwest quarter of the northeast quarter of Section 25
2652 feet from the northeast corner of Section 26
2648 feet from the center of Section 25

In March 1985, the DNR Bureau of Engineering traversed to the area of the corner and located the east end of a road west. Searched the area of the corner but found nothing.

On July 3, 1985, we hired a backhoe operated by Larry Ruppert of Currie to dig for evidence of this corner. Dug a 10 foot east-west by 24 foot north-south hole and found a 7" by 8" by 10" stone down 15" at natural ground (no other stones were found). Reset stone down 22" with railroad spikes on the east and west side. Corner is on centerline road west, no road ditches in this area. Stone measures:

2654.54 feet from the northeast corner of Section 26

Accept the found stone as the location of the corner.

Traverse information is available from the DNR Bureau of Engineering.

165hab/missu4